



SAINT CLOUD TECH HIGH SCHOOL

Board Meeting 09.13.2017



a piece of land **rich in opportunity**

a landscape of **quarry, forest + stream**

provides the backdrop for this
journey

where we

discover, engage + grow

where we emerge

tech.

SCHEDULE REVIEW



SCHEDULE:

3 Bid Packages

Bid Package #1:

- Issued: August 1st
- Six Separate Work Scopes
- Bids received: August 22nd
- Includes: Site grading, site utilities, fields, footings and foundations, north and west entries, parking lots.

Bid Package #2:

- Issue: September 25th
- Four Separate Work Scopes
- Bids received: October 19th
- Includes: Structural Steel, load-bearing masonry, precast walls and floors.

Bid Package #3:

- Issue: November 17th
- Estimating 15 Separate Work Scopes
- Bids received: December 19th
- Includes: Exterior envelope, interiors, outbuildings, landscaping, site and field lighting.

BID PACKAGE 1

Contracts approved by the School Board August 24

- **Work Scope (Contract 1)** Peterson Companies
 - o Earthwork, Utilities and Athletic Field Improvements
- **Work Scope (Contract 2)** Landwehr
 - o North Access Road
- **Work Scope (Contract 3)** W Gohman Construction
 - o Footings and Foundations for the Building
- **Work Scope (Contract 4)** Donlar Construction
 - o Site Concrete
- **Work Scope (Contract 5)** Knife River
 - o Asphalt Paving
- **Work Scope (Contract 6)** Seating and Athletics Facilities
 - o Grandstands, Bleachers, and Pressbox

BID PACKAGE 1

Site items not included in the above contracts:

- Landscaping and Sodding and Seeding
- Athletic Fields Lighting
- Scoreboards
- Flagpoles
- Decorative Fencing
- Dewatering
- Dugouts (Bid Pack 2)
- Exterior Signage and Monument Sign
- Pelzer Drive Improvements
- North Access road creek crossing and lighting
- Wetland Mitigation (separate purchase order with wetland bank)

BID PACKAGE 2

Release Date: September 25, 2017

Bid Date: October 19, 2017

- **Work Scope 1** Masonry and Stone Cladding
Includes:
 - o Load bearing masonry walls and non load bearing masonry walls
 - o Exterior stone cladding
- **Work Scope 2** Precast Wall Panels, Precast Floor Plank
Includes:
 - o Architectural precast wall panels
 - o Precast floor plank
- **Work Scope 3** Structural Steel Material
Includes:
 - o Structural steel framing materials
 - o Steel joist materials
 - o Steel decking materials
 - o Gratings and floor plate materials
 - o Metal roof panels at dugouts - materials
- **Work Scope 4** Structural Steel Installation
Includes:
 - o Structural steel framing installation
 - o Steel joist installation
 - o Steel decking installation
 - o Gratings and floor plate installation
 - o Metal roof panels at dugouts - installation

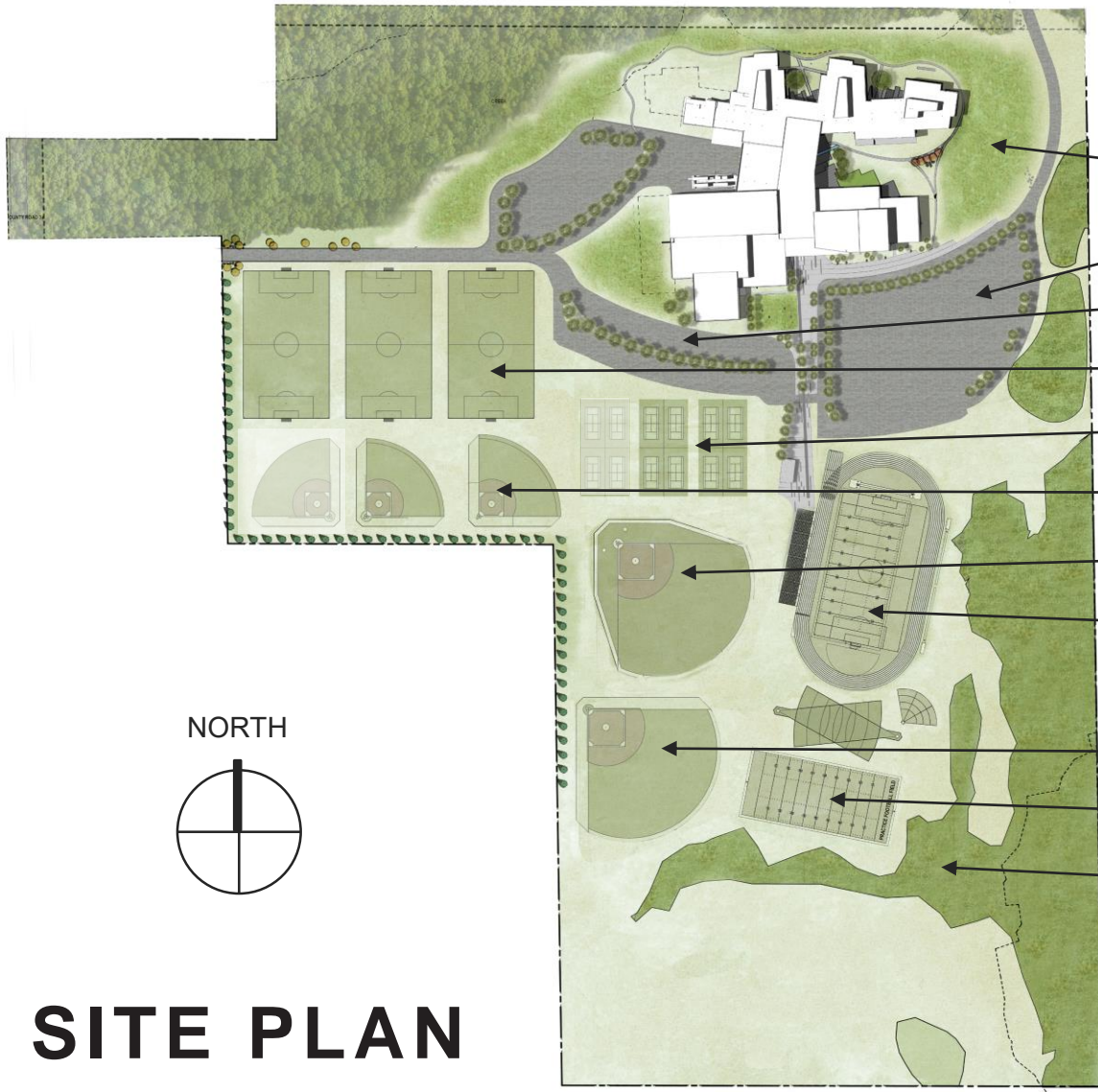
QUARRY

WOODLAND

CITY PARK

WETLAND

ST. CLOUD TECH HIGH SCHOOL, EXTENDED SITE



RAIN GARDENS

STUDENT PARKING

BUS DROP-OFF

SOCCER FIELDS (3)

TENNIS COURTS (8)

SOFTBALL (2+1 FUTURE)

VARSITY BASEBALL

MULTI-PURPOSE STADIUM

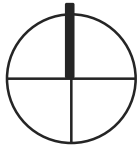
W/ TRACK

JV BASEBALL

PRACTICE FIELDS

WETLANDS

NORTH



SITE PLAN



Site Aerial



Woodland Quarry

August 9, 2017



Woodland Quarry

August 9, 2017



Woodland Quarry

August 9, 2017



Woodland Quarry

August 9, 2017



Woodland Quarry

August 9, 2017



First Floor

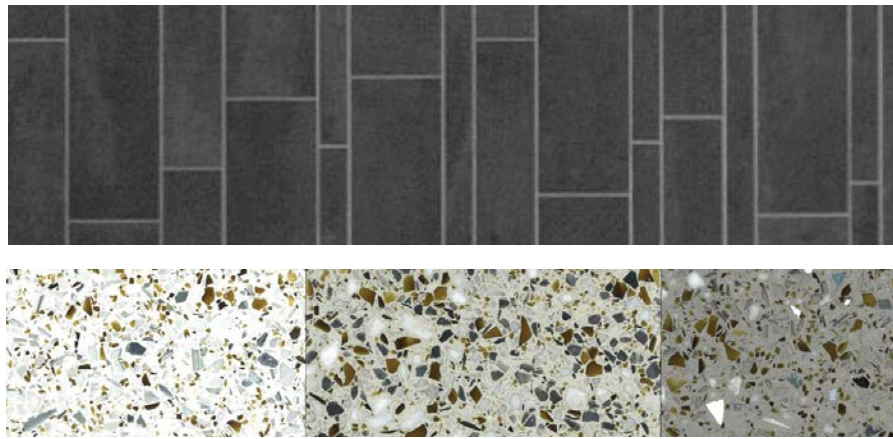
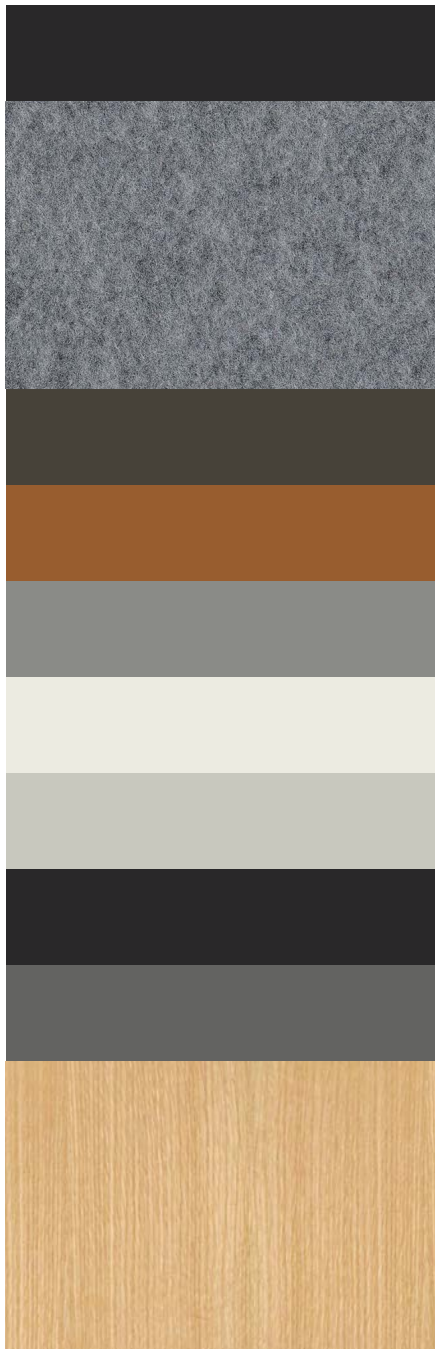
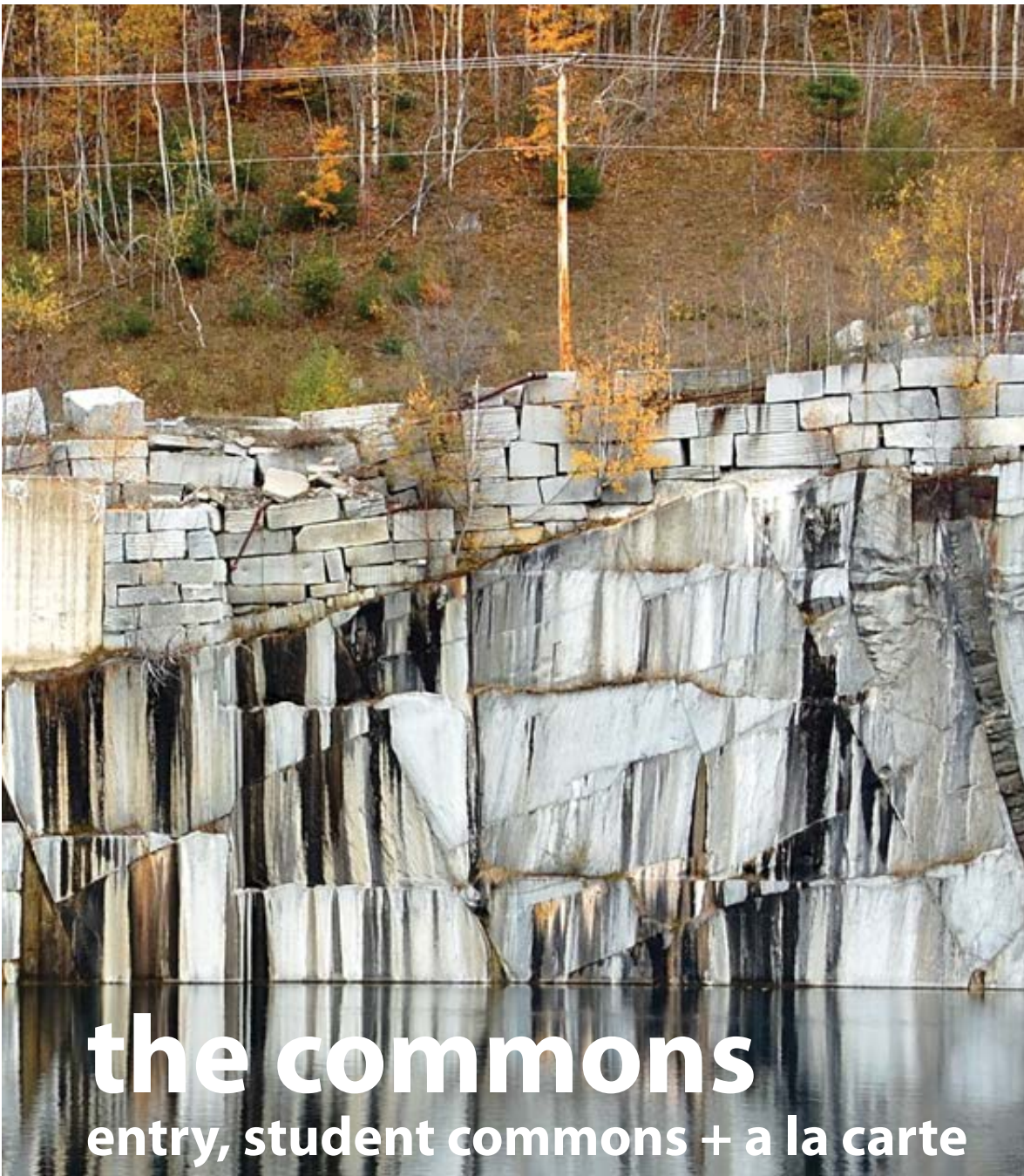
August 9, 2017

INTERIOR DESIGN UPDATE



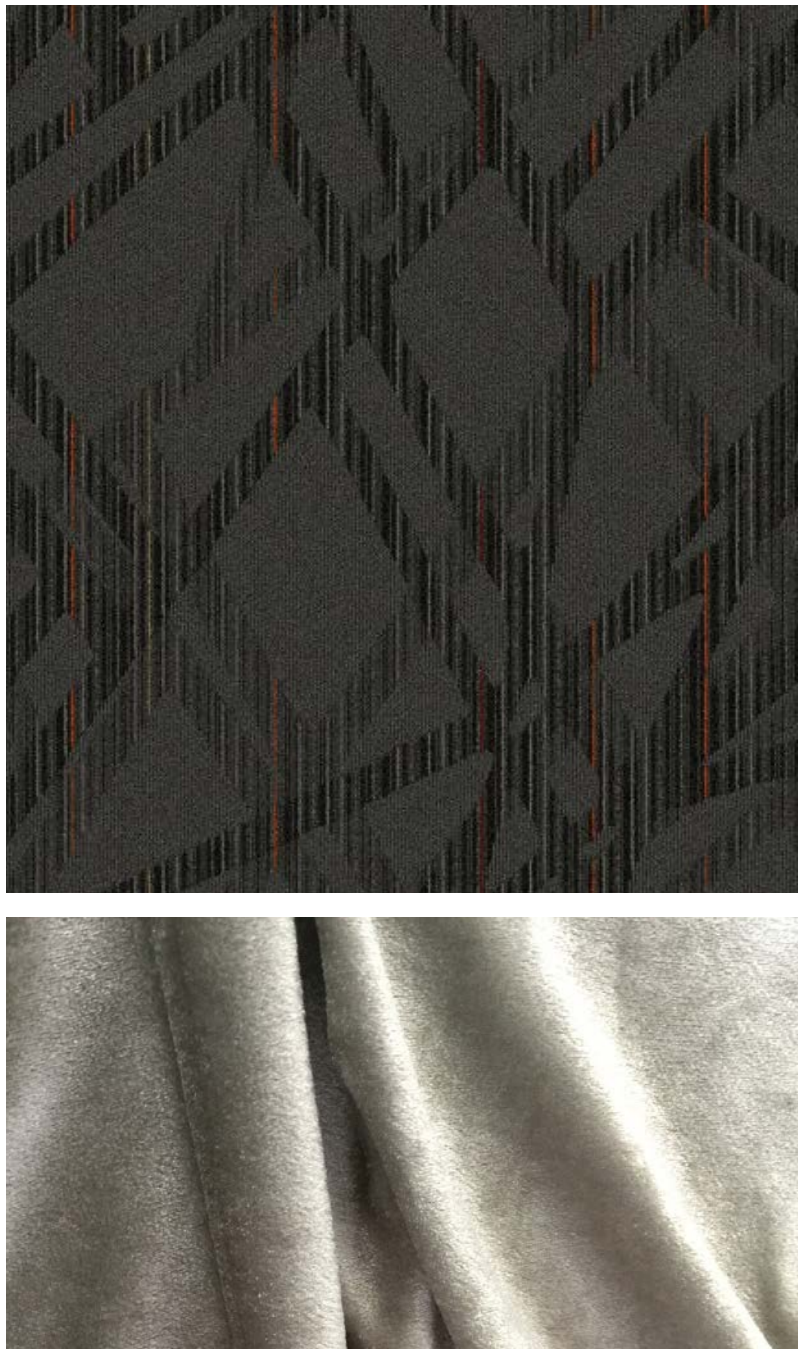
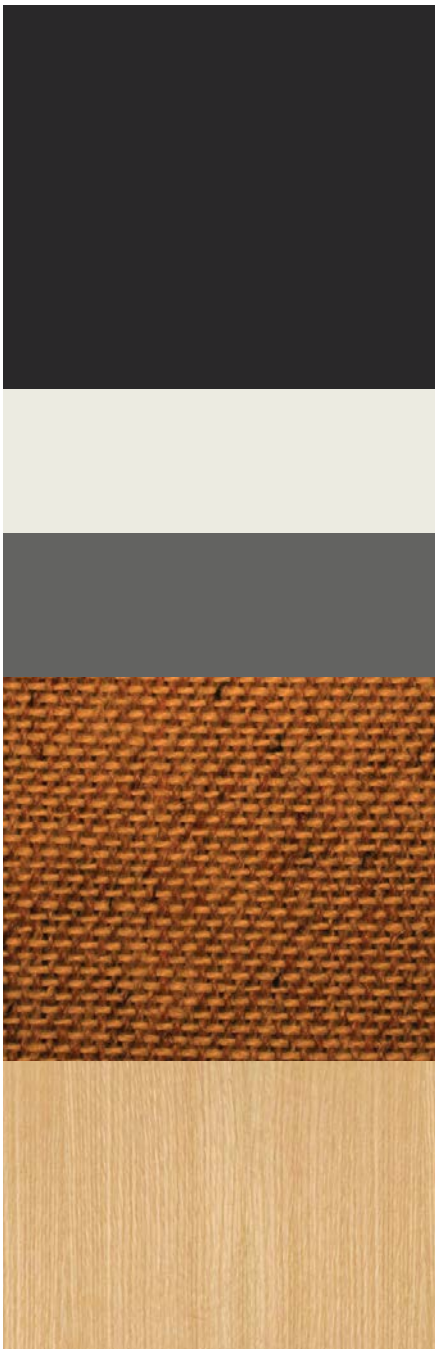
the granite quarry

hues of deep charcoal and rust pay homage to the industry that contributed to St. Cloud's early development





student commons



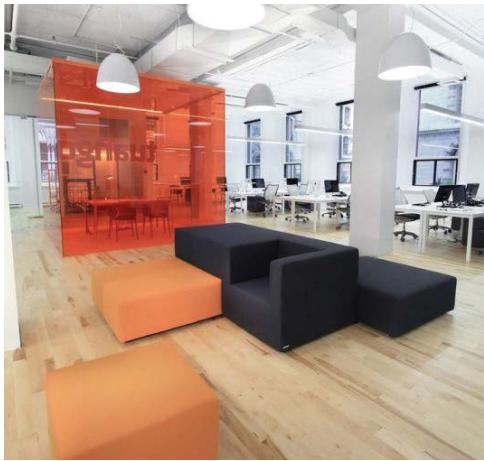
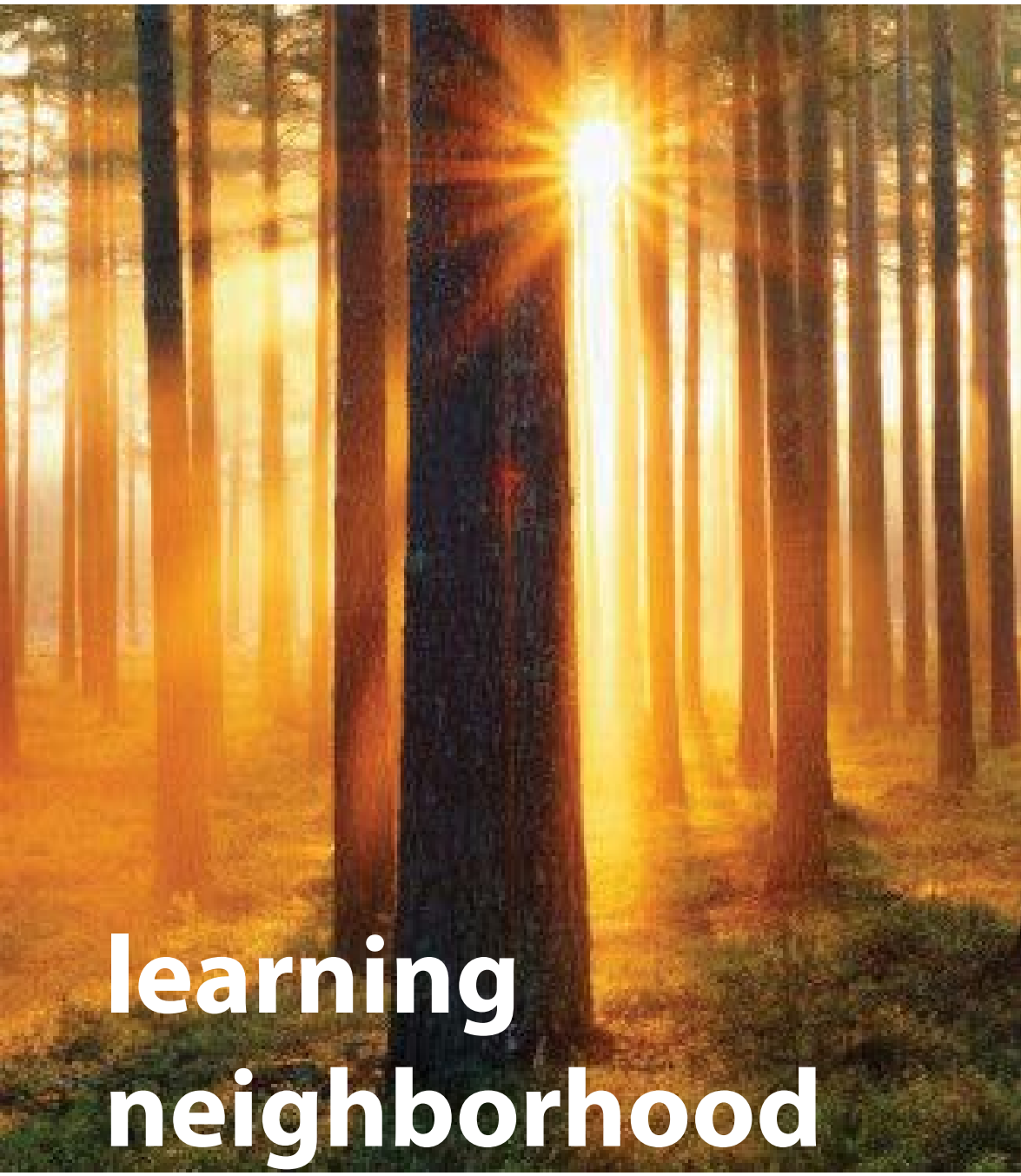


performing arts

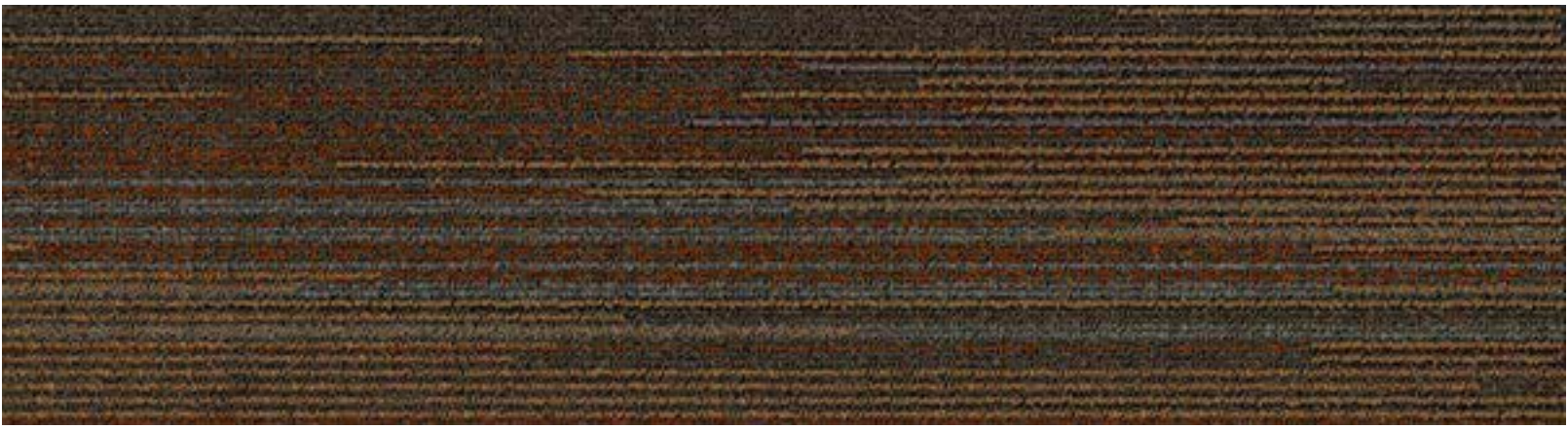
the forest

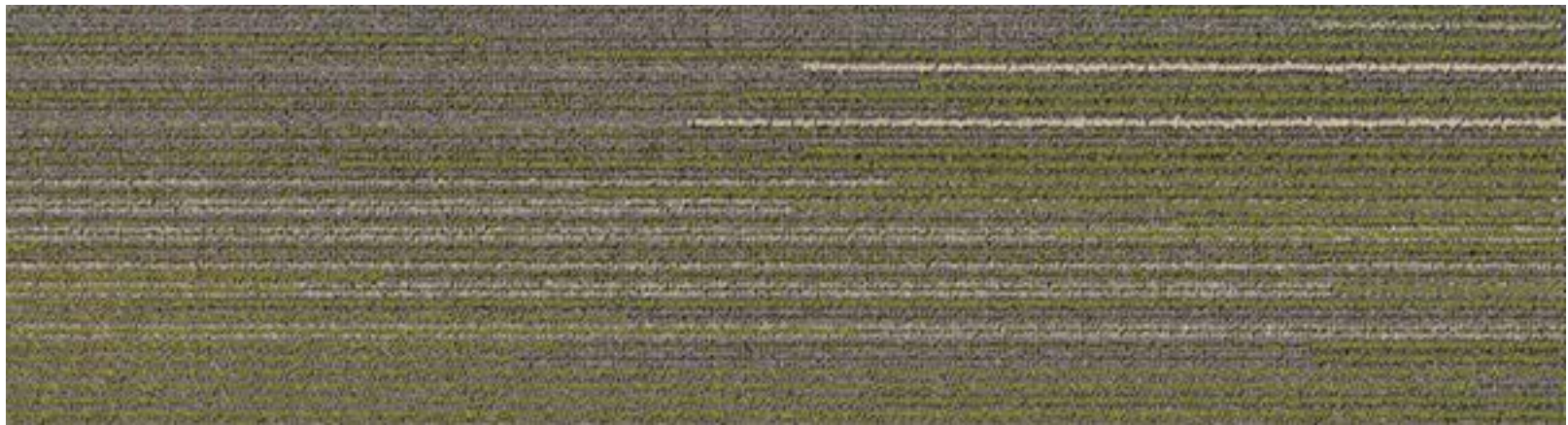
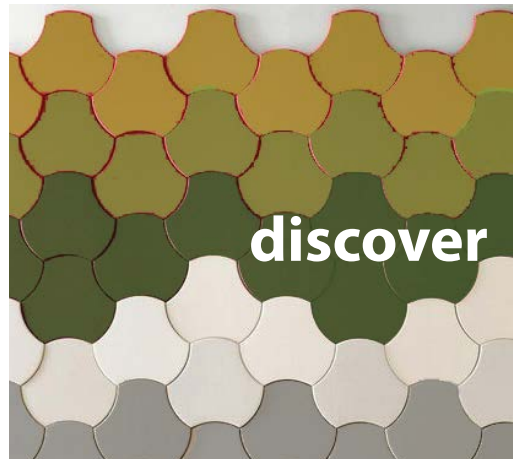
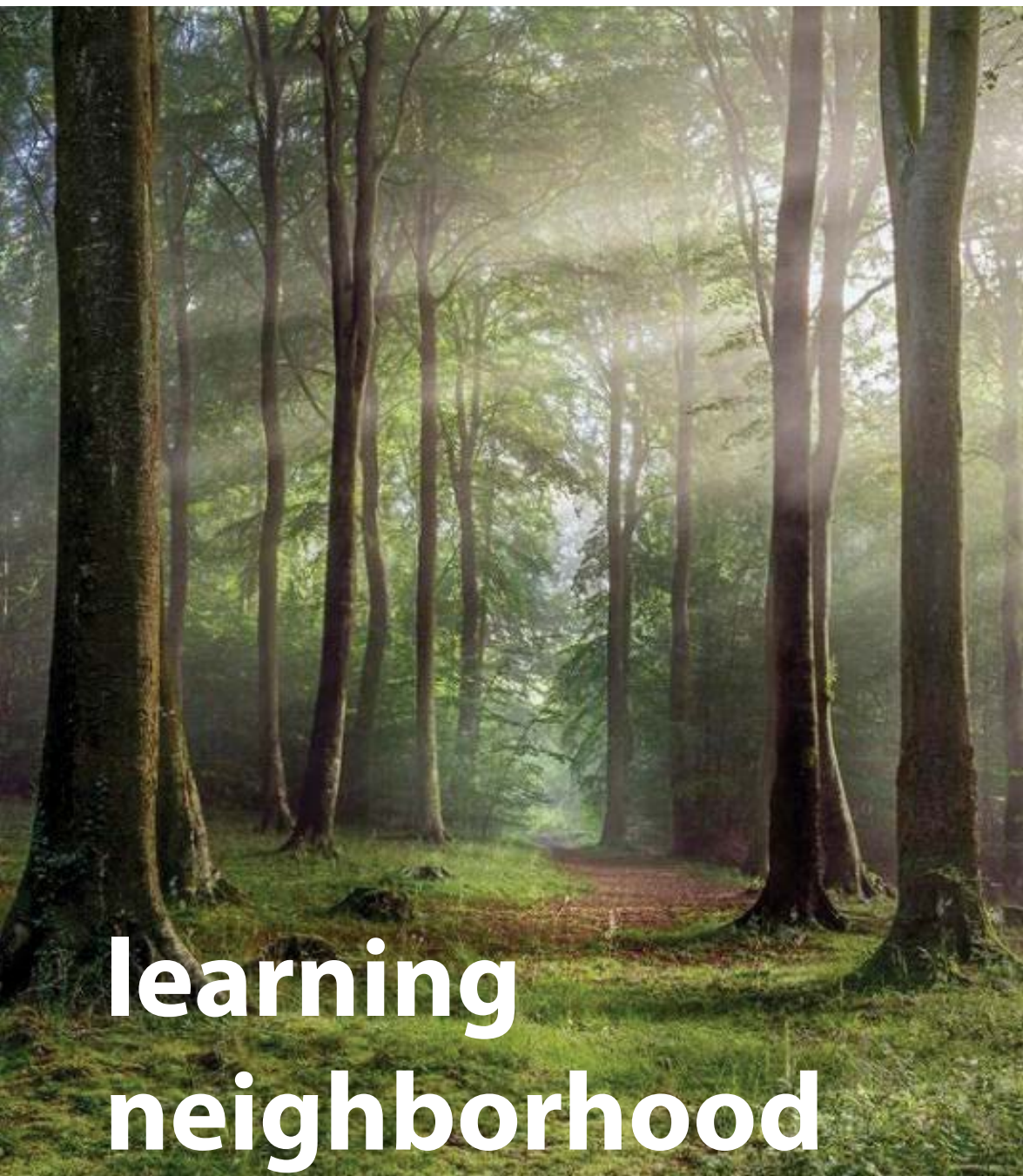
filtered light at sunrise,
midday and sunset sets the
stage for discovery

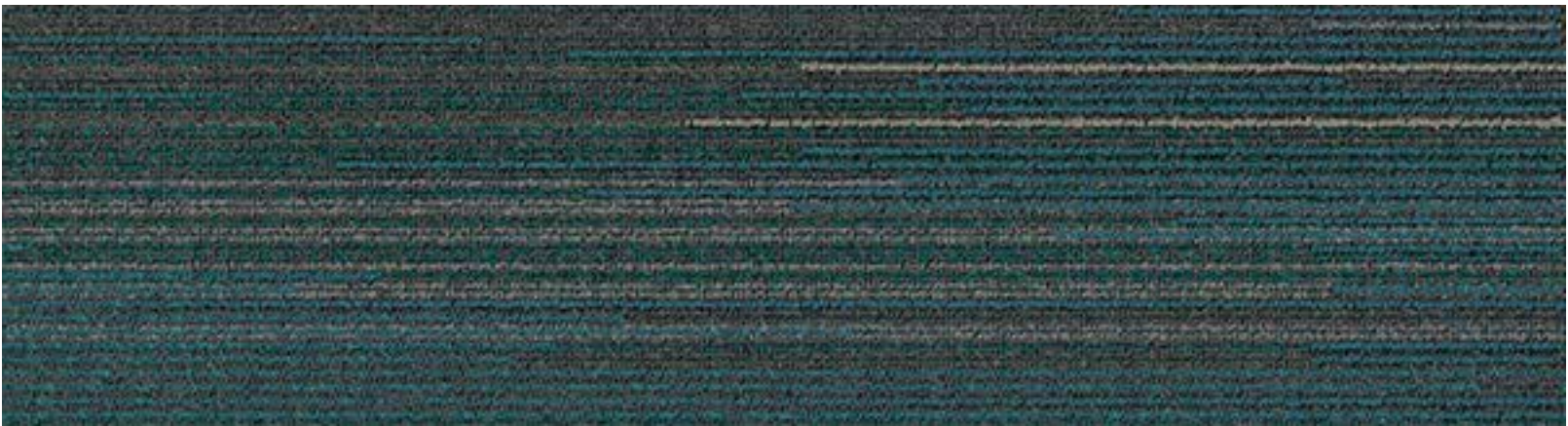




learning
neighborhood





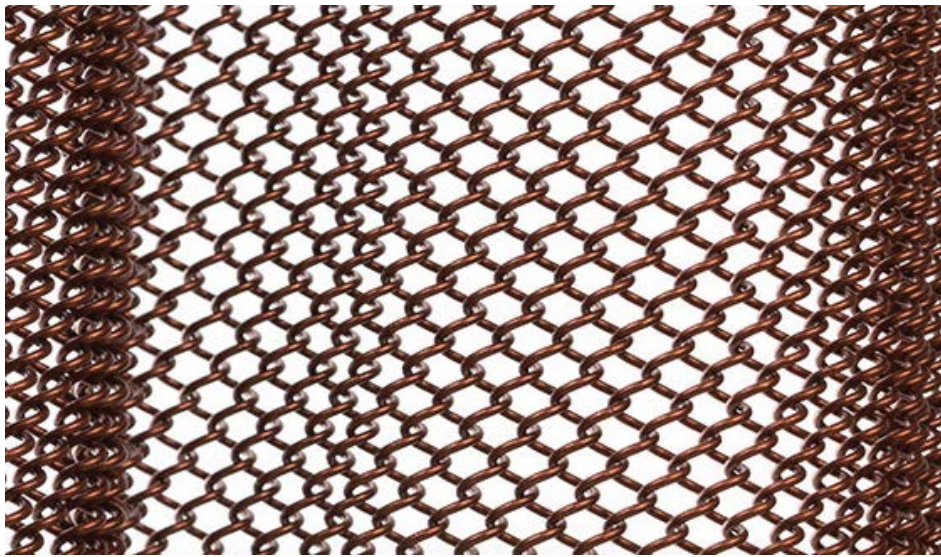
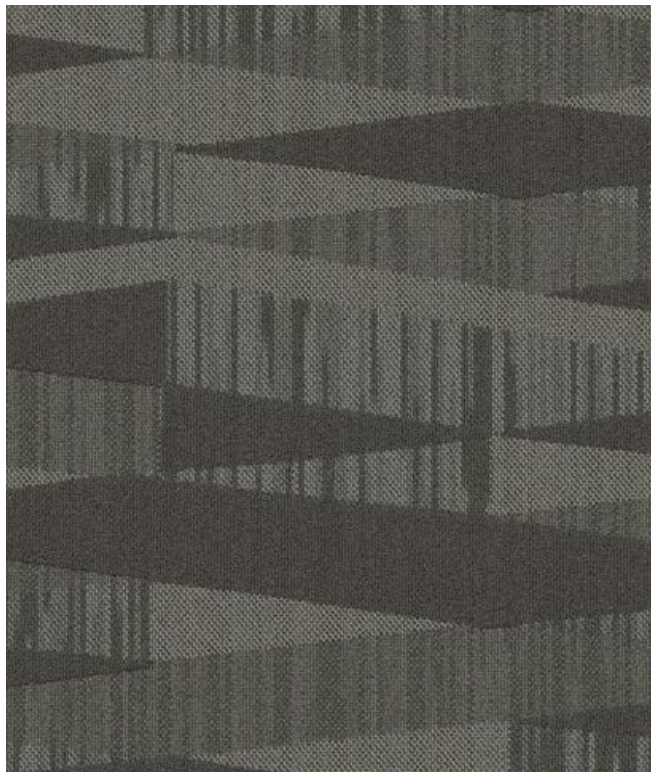
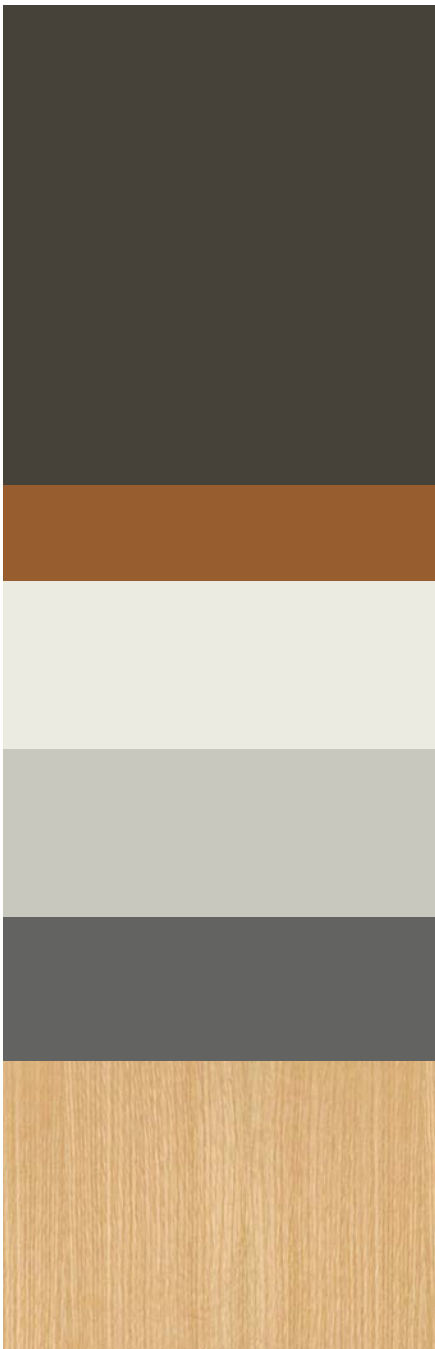




neighborhood gateway



learning neighborhood



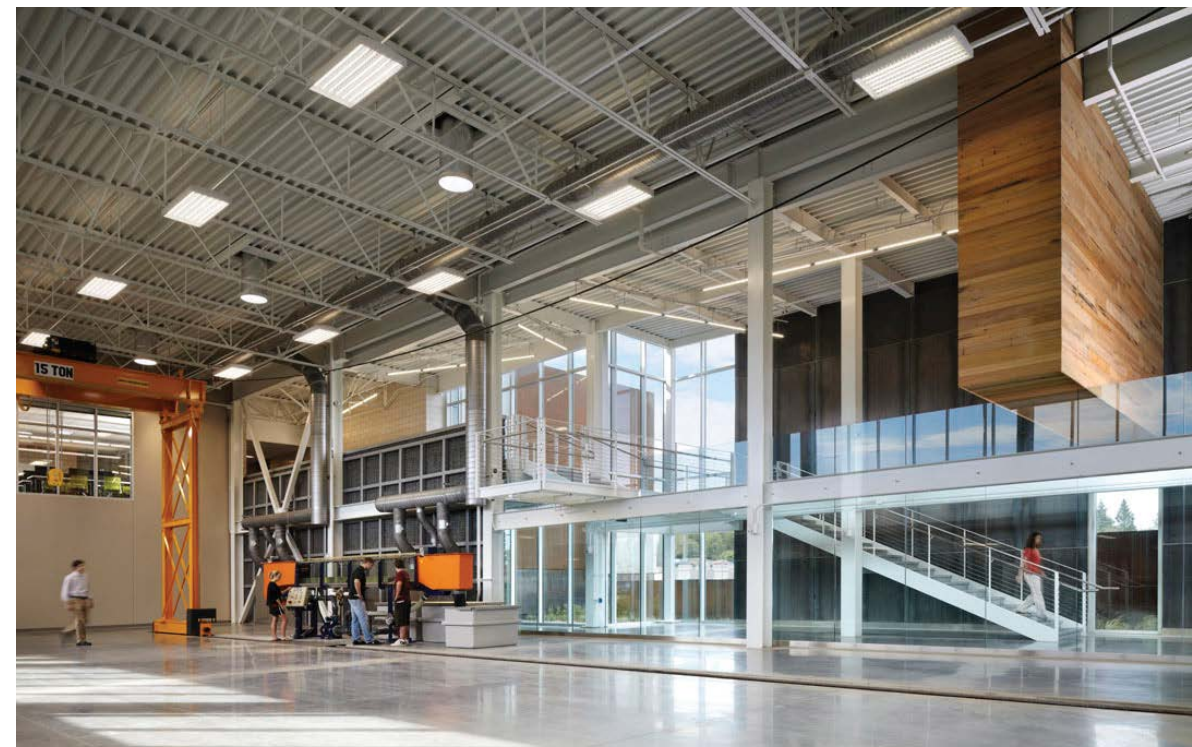
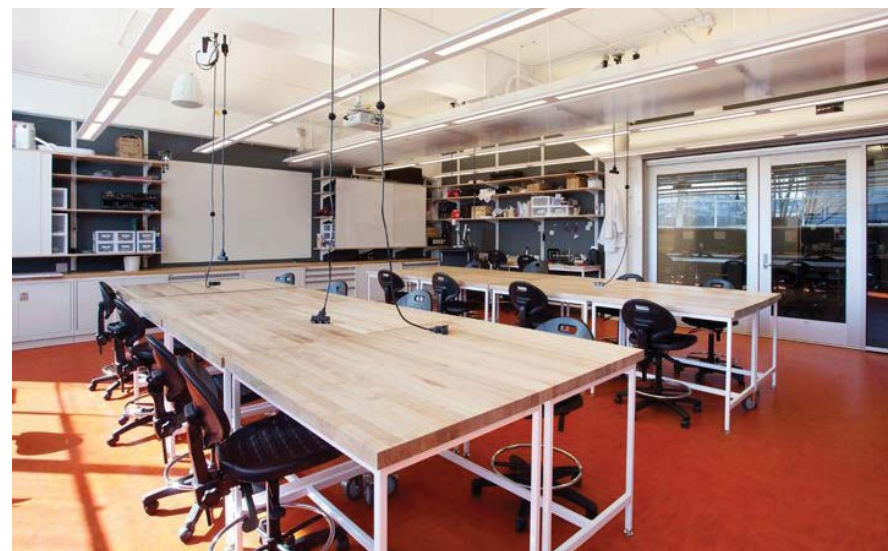
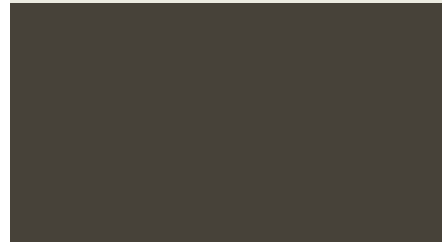
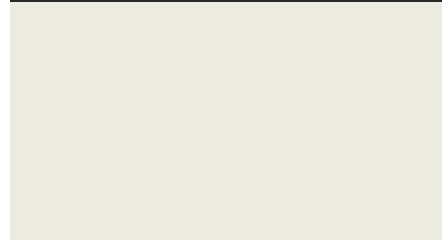


media center



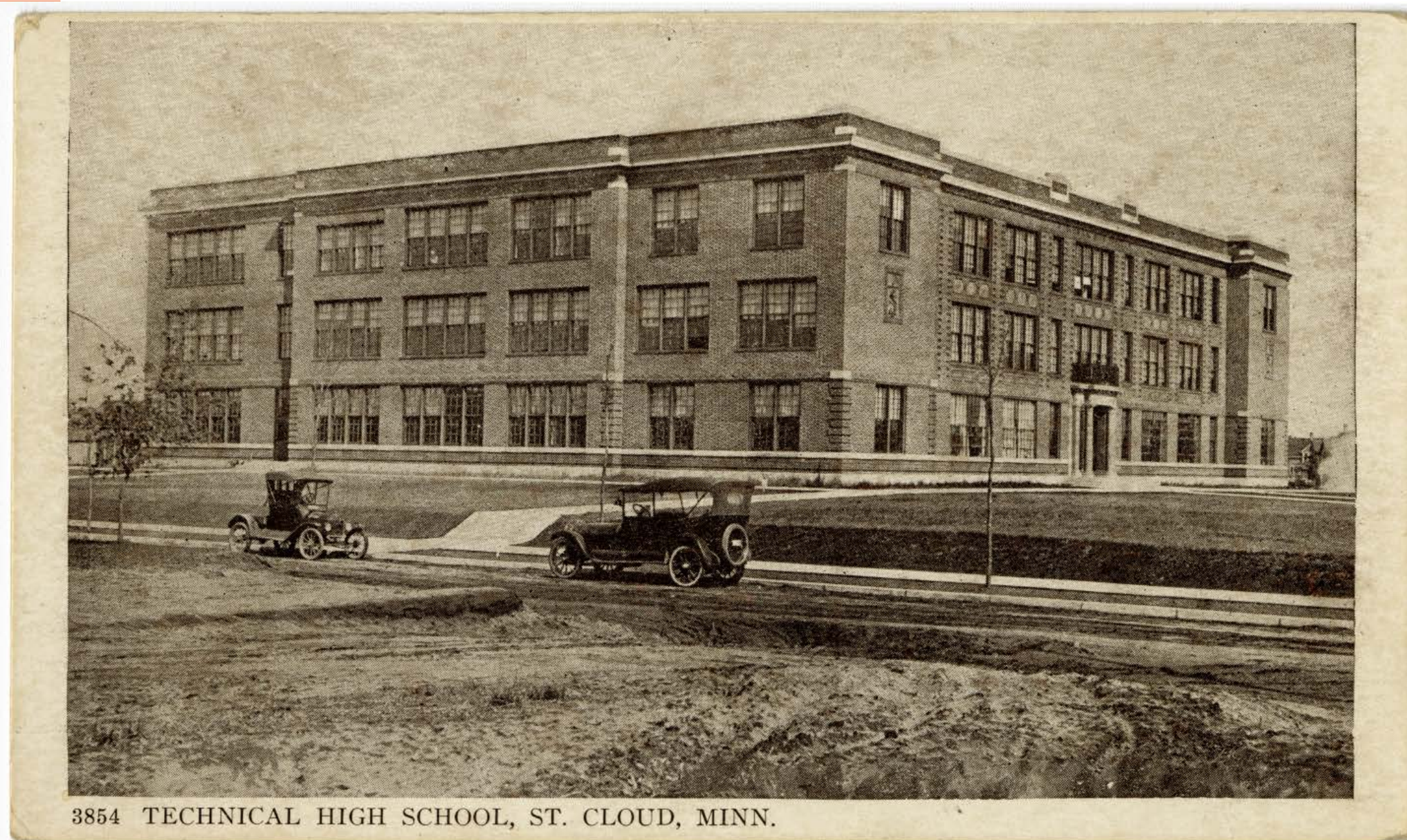
maker spaces

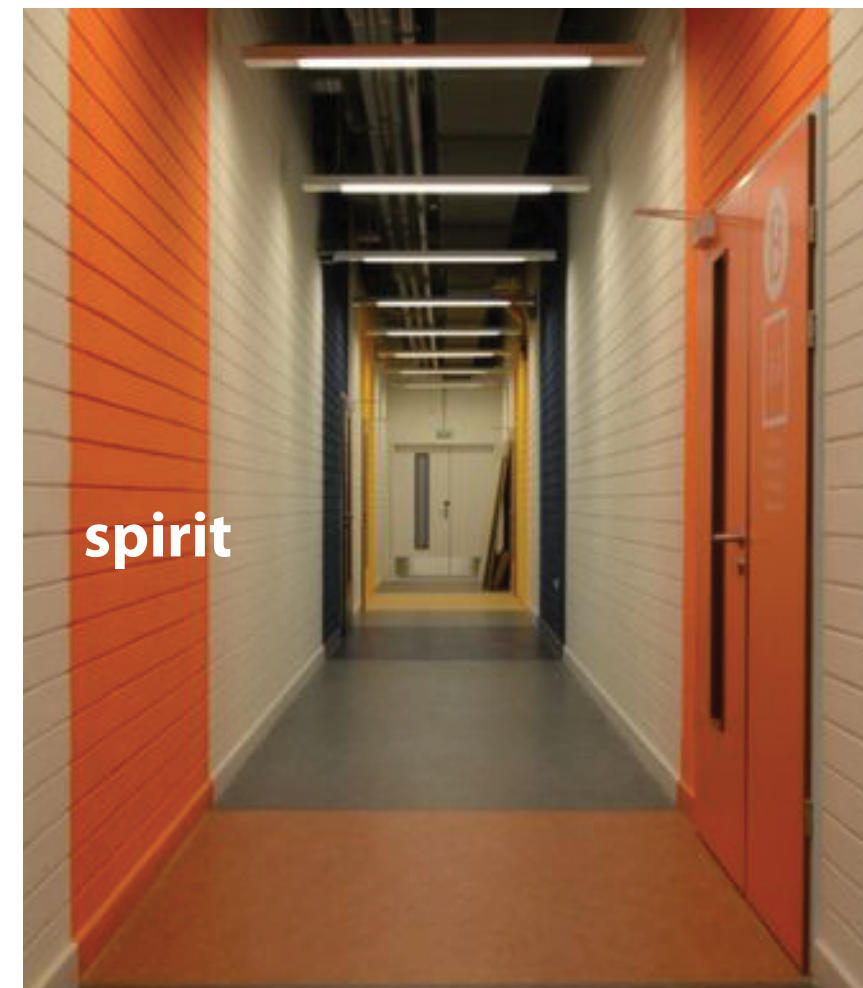
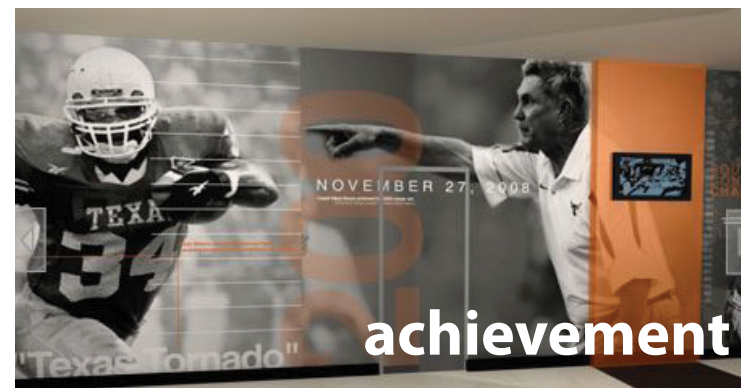
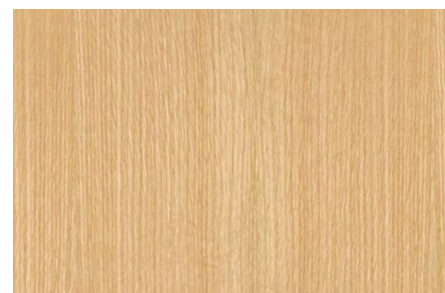
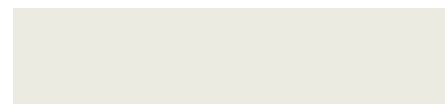
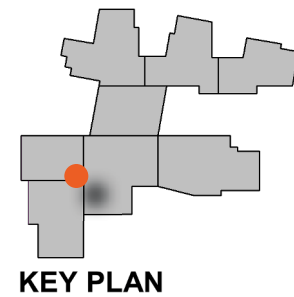
CTE, Fab Labs, Art



tiger pride

Tech's history is celebrated by honoring tradition of the past and blending it with the future...





PERMIT REVIEW

Governing Body	Permit/App/ Submittal	Submission Date	Anticipated Approval Date	Status
Zoning Board of Appeals	Conditional Use Permit	4/28/2017	5/16/2017	Complete
Stearns Co., DNR, MPCA and others	Technical Evaluation Panel (TEP)	5/26/2017	6/14/2017	Complete
Stearns County	Wetland	5/26/2017	6/27/2017	Complete
Army Corps	Creek Crossing	5/26/2017	8/7/2017	Complete
DNR	Creek Crossing	5/26/2017	1/1/2018	In-Progress
City of St. Cloud and DNR	Stormwater	5/26/2017	9/1/2018	Submitted - 90-120 review process- working to expedite
City of St. Cloud	Land Disturbance	8/1/2017	8/24/2017	Complete
State of Minnesota	Utilities	7/14/2017	8/31/2017	In-Progress
MPCA	SWPPP	7/14/2017	8/14/2017	Complete
City of St. Cloud Planning	Plat	5/22/2017	6/13/2017	Complete
St. Cloud City Council	Plat/Subdivision Agreement	6/13/2017	7/10/2017	Complete

CONSTRUCTION UPDATE







THANK YOU!

